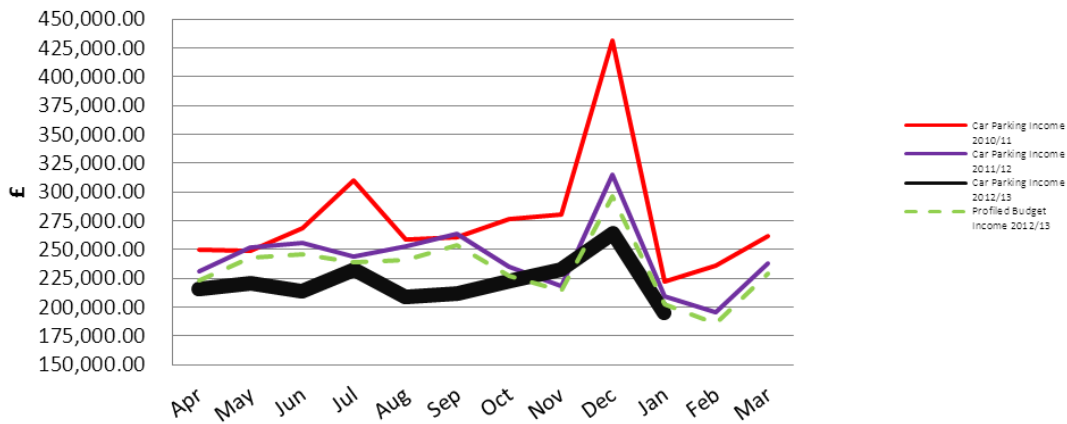
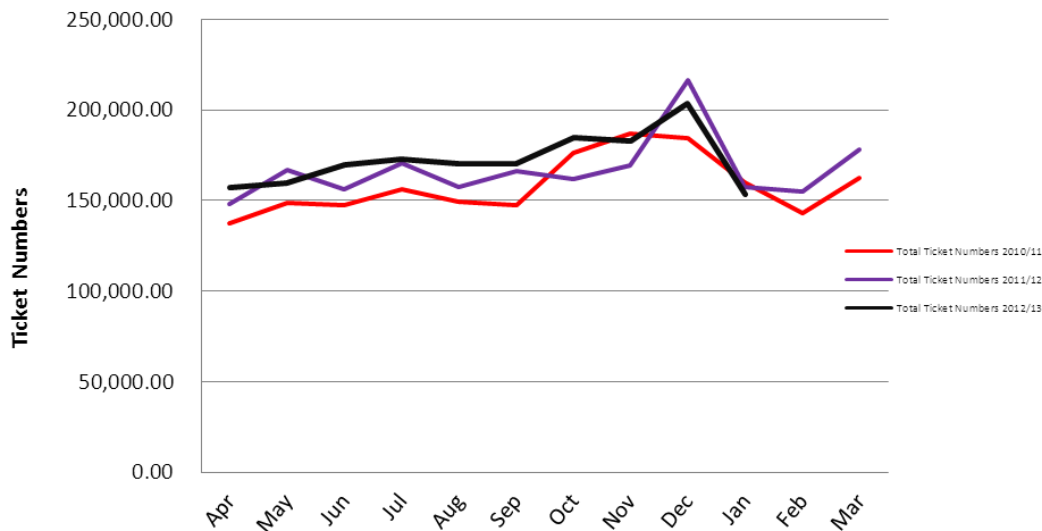


Total Daily Ticket Income 2010/11, 2011/12 and 2012/13



Total Summary Ticket Numbers 2010/11, 2011/12 and 2012/13



Notes:

- Income to the end of period 10 is £167k less than the budgeted for the first ten months of 2012/13
- The volume of tickets sold to the end of period 10 is 53k higher than the same period in 2011/12
- St John's Surface Car Park: closure was effective from 15 June.